

HOLZ TECHNIK

Dual Education Program

2022 – 2023

www.easternmillwork.com

Elevating the Craft.

“This program addresses almost everything we have put forward as the blueprint for New Jersey’s economic future. It is a program focused on advanced manufacturing, one of the sectors in the innovation economy that I know we can dominate ... Quite simply if you want to catch a glimpse of New Jersey’s economic future, in how we knit all of our advantages together, it’s right here at Eastern Millwork.”

Phil Murphy, Governor of New Jersey

Contents.

About Eastern Millwork Inc.	04
About Holz Technik Academy	06
Eastern Millwork, Inc. Benefit Highlights	07
Summer Experience	08
On the Job Training	09
Holz Technik Classes	10
Multiple Career Options	12
Holz Technik 2022 – 2023 Milestones	15

About Eastern Millwork, Inc.



Eastern Millwork, Inc. (EMI) is a 30 year old custom woodworking company that has embraced technology to automate high-end manufacturing and installation. We operate from a newly constructed facility factory in Jersey City, New Jersey.

EMI challenges the common belief that high quality woodwork can only be provided manually. In an industry slow to evolve, our company's focus has been to employ technological innovations in architectural woodwork to deliver uncommon value to our customers without sacrificing old world quality.

We have developed and implemented both information management and

production automation solutions within a lean and high production velocity program. The result is reduction of all non-value actions and increased supply chain speed with flexibility for a dynamic project environment. This limits quality control variables and increases our productivity through the focused reduction of labor per parts produced. The end product is higher quality, faster delivery, and lower cost for our projects.

Andrew Campbell, Founder / CEO

Technology.
Craftsmanship.
Innovation.

“... students, you are destined to promising careers that will contribute significantly to the technological advancements and challenges that are crucial to everyone’s well-being ...”

Dr. Christopher Reber,
Hudson County Community College President

About Holz Technik Academy

“ I’m very excited to have more creative work to be doing, I’m excited to get my education and to start working with everybody.

Amber Gutierrez, Holz Technik Class of 2024

A lot of what Eastern Millwork does is very much in line with things that I have always been interested in ... and as an added bonus, it’s local here in New Jersey where I was born and raised – I have a great sense of community for this place.

Isaiah Montalvo, Holz Technik Class of 2024 ”



Eastern Millwork (EMI) has entered into partnership with Hudson County Community College (HCCC) to develop and implement a joint federally registered apprenticeship program. Apprentices that complete this earn-while-you-learn program will climb the career ladder at Eastern Millwork and acquire their college degree without any college debt.

This partnership embraces both talent and technology. It will open the doors for the young people of our community to have well-paying careers and it will enable EMI to continue to grow its thriving business in Jersey City.

An industry leader in custom high-end woodwork, EMI is committed to hiring qualified high-school students each year. The Jersey City based company’s five-year, dual-education program will have a starting salary of \$24,500 and

will rise based on merit. The Apprentices will be awarded an Associate of Applied Science (A.A.S.) degree in Advanced Manufacturing from HCCC in three years and a bachelors degree in Technical Studies from TESU.

Holz Technik’s dual-education model is based on proven European forms of education. In this model, apprentices hired by EMI will split their time between practical experience and coursework, successfully completing virtual classes or classes on site at their work.

Eastern Millwork, Inc. Benefit Highlights



401 K Profit Sharing Plan

Eastern Millwork, Inc. will make a contribution combination of safe harbor and profit sharing contributions, which on average have been 5% of the employee's salary, subject to change annually.

Requirements:

- Attained the age of 21
- Completed 12 Months of Service
- Eligible employees can contribute through payroll deductions up to the maximum amount allowed by law for 2022 is \$20,500.

Vacation/Holiday

Each year, Eastern Millwork employees will get:

- Ten days (10) paid vacation
- Ten days (10) company holidays

Health Insurance

Eastern Millwork, Inc. provides premium health insurance benefits for the:

- Employee
- Their spouse
- Their Dependents (under 26)
- Coverage is provided through United Health Care/Oxford
- Employees will have access to the vast network of doctors/providers/facilities that are covered by United Health Care/Oxford
- Employee will be eligible for coverage 90 days after their date of hire
- Premiums are 100% paid by Eastern Millwork, Inc.

Summer Experience



The newly hired apprentices start their careers and education by taking a one (1) credit class at HCCC Community college; "CSS-100 College Student Success". This class helps students acquire the skills and perspective they need in order to simultaneously succeed in college and prepare for careers. Students explore the cultures of college and the workplace with an emphasis on the role of communication skills, credentials, and research techniques in each. Time and stress management are also considered. Students submit weekly journals on assigned topics.

In addition, they participate in small group discussions and seminars, investigate the support services available in the College and community, and prepare job search portfolios.

Following the college prep class, the apprentices will spend 4 weeks learning basic cabinetry and woodworking. They will be introduced to basic wood terminology and skills at a basic level. They will learn how to identify wood, design and build several projects including part lists, raw materials preparation and hand assembly.

On the Job Training



While we have an extensive curriculum to achieve degrees in Advanced Manufacturing and Architectural Manufacturing Management we also believe in the German dual education system of working while learning. Our apprentices will be applying what they learn in the classroom with

participation in the day-to-day activities at Eastern Millwork.

They will be rotated through all aspects of the business to gain a solid foundation in our trade. This includes estimating, engineering, fabrication and installation departments. As their skill set grows, so does their responsibilities and pay scale.

“It is a close connection of theoretical learning and practical work that makes this training so valued. The students learn a hands-on attitude and are being taught the knowledge that they can immediately apply on their job. This inclusive educational system is an essential part of the ‘Made in Germany’ brand.”

David Gill,
Consul General, Federal Republic of Germany

Anticipated Holz Technik Classes

DEGREE REQUIREMENTS

HOW SATISFIED

HOW SATISFIED

I. General Education Requirements

A. Intellectual And Practical Skills

ENG-101 COLLEGE COMPOSITION I

ENC-102 ENGLISH COMPOSITION II

ENG-112 SPEECH

MAT-100 COLLEGE ALGEBRA

SOS-110 CRITICAL
INFORMATION LITERACY

B. Civic And Global Learning

TESU DIVERSITY

TESU ETHICS

TESU CIVIC ENGAGEMENT

C. Knowledge of Human Cultures

TESU SOCIAL SCIENCE ELECTIVE

TESU HISTORY ELECTIVE

ENG-211 BUSINESS
COMMUNICATION

ENG-103 TECHNICAL
REPORT WRITING

HCCC HUMANITIES OR
SOCIAL SCIENCE ELECTIVE

CHP-111 COLLEGE CHEMISTRY I

SCI-101 INTRO TO
PHYSICAL SCIENCE

Anticipated Holz Technik Classes

DEGREE REQUIREMENTS

HOW SATISFIED

HOW SATISFIED

II. Technical Studies

A. Corollary Requirements

STA-201 STATISTICS

MAT-129 PRECALCULUS

PHY-113 PHYSICS

B. Technical Studies Single Discipline

ADM-185 FUNDAMENTALS OF
ARCHITECTURAL MANUFACTURING

ADM-182 WOOD SCIENCE

ADM-232 WELDING

ADM-256 CNC
FOR WOODWORKING

ADM-241
MAUFACTURING DESIGN

CSC-118 PYTHON
PROGRAMMING

ADM-282 MACHINE PROCESS IN
ARCHITECTURAL WOODWORK

C. Technical Studies

ADM-201 MATERIAL SCIENCE

SCM-101 SUPPLY CHAIN
MANAGEMENT PRINCIPLES

APS-302 CUSTOMER SERVICE

ELD-311 MICROPROCESSORS

APS-400 OSHA

APS-402 APPLIED
QUALITY MANAGEMENT

MAN-435 PROJECT MANAGEMENT

APS-401 CURRENT TRENDS
& APPLICATIONS

III. Electives

CSS-100 COLLEGE
STUDENT SUCCESS

EGS-101 ENGINEERING GRAPHICS

ELE-211 DC CIRCUITS

ELE-212 AC CIRCUITS

CTR-212 PROGRAMMABLE
LOGICAL CONTROLLERS

TESU FREE ELECTIVE

Multiple Career Options

This program will give you the foundation to move into many job opportunities we have as outlined above and equip you with a valuable understanding and credentials to work in the rapidly expanding advanced manufacturing industry.



IT DEPARTMENT



ENGINEERING DEPARTMENT

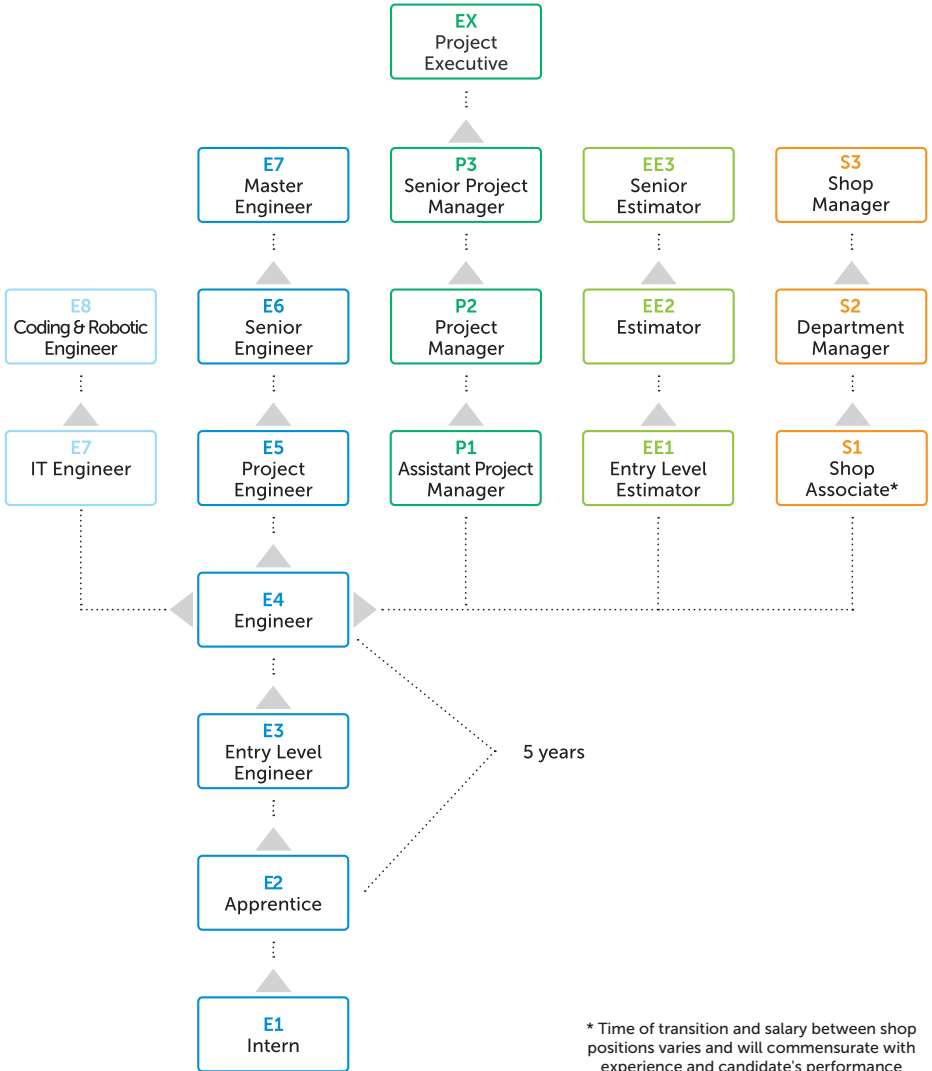


PROJECT MANAGEMENT DEPARTMENT



ESTIMATING DEPARTMENT

Multiple Career Options



* Time of transition and salary between shop positions varies and will commensurate with experience and candidate's performance



“This program will create the direct connections we need between our higher education and community on one hand and innovation and economy on the other.

Phil Murphy, Governor of New Jersey”

Holz Technik 2022 – 2023 Milestones

We are looking for

High School Graduates – to fill our Class of 2027

In the application, we want to know your

Ability to think spatially

Ability and desire to build

Ability and desire to commit to your employer, Eastern Millwork

Academic ability to persevere through this intense program

Students and Parents Open House * By invitation only from selected applications *

Location: Eastern Millwork, 143 Chapel Ave, Jersey City NJ 07305

Dates: January 2023 (dates to be announced)

February 2023 (dates to be announced)

Application Dates

November 1, 2022

February 15, 2023

Applications activated

Last day to submit

Application available from these sites

Eastern Millwork

Hudson County

Community College

easternmillwork.com/apprentice-program/

hccc.edu/apprenticeship/application/

Interviews and Selection Process

February – March 2023

Acceptance Notification

April 1, 2023

Employment and Classes Commence

July 2023

HUDSON
COUNTY
COMMUNITY COLLEGE



Regi Dimitris Mulla
Holz Technik Coordinator

143 Chapel Avenue
Jersey City, NJ 07305P
(201) 763-8041

rmulla@easternmillwork.com



**Eastern
Millwork**